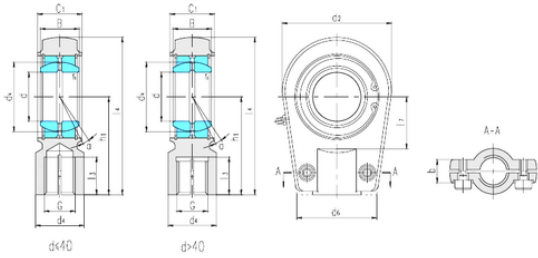




# Thk Environmental Axis.



## LS SIR35ES Rodamientos Deslizantes

Bearing No. SIR35ES

Bore Diameter	35 mm
d	35 mm
B	25 mm
b	28 mm
d2	78 mm
d4	40 mm
d6	66 mm
dk	47 mm
h1	70 mm
l3 min.	29 mm
l4 max.	112 mm
l7 min.	38 mm
r min.	0,6 mm
C1	30 mm
Thread (G)	M28 × 1,5
Bolt (G)	M10 × 30
Angle	6 °
Weight	1,24 Kg
Basic dynamic load rating (C)	79 kN

SIR35ES Bearing 2D drawings and 3D CAD models